

SANBORN MAP ADDRESS KEY, BUTTE, MT

Unique Identification Number	Address	Information	Sanborn Sheet Number
1	829 West Copper	1910: William and Addie Birthwright, a couple in their early 50s, owned their home here in 1910. William worked as a chef, while Addie was employed as a hairdresser.	5
2	219 North Emmet Ave	1930: John and Vera Brown owned their home here in 1930. John is listed as working as a janitor in the telegraph office.	13
3	217 North Emmet Ave	1930: Mary and Arthur Chappell lived here in 1930. Arthur worked as a hotel waiter. The couple owned their house.	13
4	727 West Broadway	1910: Lizzie Johnson was a 38 year old woman who worked for the white Largy Family as a maid. She lived with the Largys here at 727 Broadway. Frank and Sarah Thompson were also employed by the family as a cook and butler.	15
6	715 West Park	1930: This was the home of John W. Duncan and his family. Dr. Duncan was the first and only black doctor to serve Butte in the early 20 th Century. (See the Duncan Historic Property Record Form in the Places Tab.)	15
7	209 North Jackson	1910: 60 year old Mary Withers owned this home where she lived with her teenage children John and Martha. Martha worked with her mother as maids for a private family in 1910.	16
8	541 West Broadway	1930: 18 year old Phillis Glenn rented this small house with her 16 year old brother, Clinton.	16
9	523 West Broadway	1930: Fredrick, Emma and Rudolph Stewart, possibly siblings, lived here with two lodgers, Richard Brown and Grace Serena.	16
10	543 West Broadway	1910: Thomas Ward, a 40 year old brick layer, lived here alone in 1910.	16
11	305 West Broadway	1910: Hilda Scott lived and worked here at a boarding house in 1910.	17
12	211-213 West Park	1930: Curtis Burnett and James Grant were the only two black residents of the Livingston Hotel here on West Park.	17
13	10 South Washington	1910: Frank Shannon lived here with his wife Leanna, sister-in-law Almanza Crews, and black female boarder Annie James. Frank worked as a porter at a barber shop.	18
14	12 South Washington	1910: 12 South Washington operated as a black boarding house in 1910. There were eight individuals living here at the time of the census.	18
15	217 West Mercury	1930: James lived here with his wife Alberta. James was the minister for the Bethel Baptist Church next door. Bethel was one of two black churches in Butte at the time, the AME church located four blocks to the south.	18
16	106 South Idaho	1930: Middle aged couple Ike and Elizabeth Hayes lived here in 1930, just up the street from the black Baptist church.	18
17	116 South Idaho	1910: This was the location of the Bethel Baptist Church in 1930. It was originally built by the Masons as a gift for the African Methodist Episcopal congregation in the late 1890s, but they eventually sold the building to the Baptist Church in 1901.	18
18	218 South Washington	1930: John and Estelle Palmer owned this home in 1930. At the time, several other African Americans lived at the address and in the structures to the rear of the house.	18
19	220 West Mercury	1930: Osborne Fenter lived here with his wife Mattie, their children Mineola, Madeline, Zion S. Walker, and Zion's daughter June E. Walker.	18
20	216 West Mercury	1930: John W. Young lived here alone in 1930. He rented this house and made a living as a musician, playing in an orchestra.	18
21	210 South Idaho	1910: This was the home of the Ike and Lizzie Hayes family in 1910. By 1930, their children had moved away and the couple lived near the Baptist church on South Idaho.	18

SANBORN MAP ADDRESS KEY, BUTTE, MT

22	214 South Idaho	1910: Shoemaker, John Fagan lived here with his wife Kate and children Irene, Carrie and Johnnie Jr., and a black roomer, Clarence Mitchell.	18
23	216 South Idaho	1910: Napoleon and his wife Ma'ana Marlow lived here in 1910 with several boarders. In 1930, the house was rented by a black couple, Eugene and Hattie Robinson.	18
24	203 South Montana	1910: Willian Atherton lived here in 1910. The census is unclear whether or not he was listed as Mulatto, or white. Atherton worked as a bookkeeper.	18
25	209 South Montana	1910: Lizzie Dobson, a single 29 year old black woman lived here in 1910.	18
26	312 North Wyoming	1910: James Brown lived here with other miners working in the copper mines, all white.	20
27	204 North Main	1930: Zoila Randall lived with her white husband here in a tenement style house with other miners.	20
28	37 East Park	1910: This was the home of Osborne and Mattie Fenter in 1910. At the time the couple lived with their two daughters Ellie and Inez.	22
29	58 West Park	1930: Simon Barthly worked as a janitor for a local clothing store, and lived here in an apartment style building.	23
30	107 South Dakota	1930: Clyde Workcuff lived with his wife Mabel and children Viola, Hattie, and Francis. Clyde worked as a janitor at a real estate office.	23
31	120 Colorado	1910: Carl Hollis, William Nichol and Thomas F. McCollum shared rent on this house in 1910. The three men worked as laborers and porters for businesses.	23
32	16 West Galena	1930: Alonzo Kelly worked as a stone mason, and lived in this apartment building in 1910.	23
33	18 South Wyoming	1910: Charles Bullits operated a restaurant and lived here with a black woman, Nellie Smith, and two white boarders.	24
34	110 South Main	1930: James Green worked as a shoe shiner at a local barbershop, and rented a room in this building in 1930.	24
35	25 East Mercury	1910: Bell Miller was 26 in 1910, and lived at 25 East Mercury, which the Sanborn map labels as 'female boarding.' Indeed, Miller is listed in the census as a prostitute.	24
36	39 East Mercury	1910: Leo Carlile, a woman, also worked and lived in Butte's red-light district. Leo, is listed as a prostitute in the 1910 census.	24
37	214 South Arizona	1910: Robert and Lottie Williams lived here in 1910. Robert worked as a teamster for a lumber yard.	27
38	218 South Arizona	1910: Henry and Janette Davis lived here with their two children Bertha and Henry Jr. Henry Sr. worked as porter in a barber shop.	27
39	207 Curtis	1930: Samuel Le Grant owned his home in 1930, and worked around town as cook and doing odd jobs.	27
40	222 South Arizona	1910: 222 South Arizona was a boarding house in 1910 that housed several black men and women.	27
41	233 Curtis	1930: Marie Snyder kept and operated a boarding house here at 233 Curtis in 1930.	27
42	235 Curtis	1930: Minnie Woodone rented this house, and worked as a cook for a private family.	27
43	222 New Street	1930: Charles Cochran lived here in 1930. He does not have a listed profession in the 1930 census.	27
44	326 rear South Arizona	1910: Berry Lewis, Marion Cooper, and John Smith all lived with Henry Fagan here in a house behind 326 S. Arizona. The lodgers and Fagan worked as porters and laborers around Butte.	27
45	345 Hopkins	1910: 21 year old Luna Calhoun lived here alone in 1910. She does not have a listed profession or means of income in the census.	27

SANBORN MAP ADDRESS KEY, BUTTE, MT

47	820 East Park	1930: Jesse Cole, a 33 year old woman, worked as a servant for a private family in 1930.	31
48	1105 rear West Galena	1910: Middle aged couple, Henry and Ella Johnson lived here in 1910. Henry is listed as a hod carrier for construction crews, and Ella worked as a laundress.	
49	604 West Park	1930: This was the location of George Armstrong's Apartment building. Armstrong owned and rented rooms here for three years around 1930.	40
50	14 South Clark Ave	1910: Joe and Francis Lee lived here with their son Charles in 1910. Joe worked as a janitor.	40
51	517 West Galena	1910: Young couple George and Theodora Smith lived here in 1910. George worked as a janitor in a pool room.	40
52	624 West Galena	1910: James Yancy lived here with his mother Corina. In 1910, James worked as a porter and messenger for a local bank.	40
53	530 West Silver	1910: William Freeman and his family lived in this house in 1910. Together with his wife Mamie the Freemans raised three children. William worked as a masseur in a barber shop.	40
54	516 West Silver	1930: Louis and Anna Ridley lived here with Anna's son Joe Fortman. Louis worked as a waiter for a club, and owned his home.	40
55	514 West Silver	1930: Annie Marshall lived here with her white husband Albert Marshall in 1930.	40
56	319 South Washington	1930: Elizabeth Steele worked as a domestic maid for the white Donald J. Carmichael family in 1930.	44
57	411 West Gold	1930: 65 year old John Davis owned his home here in 1930. He worked as porter of a drug store in tow.	44
58	310 South Idaho	1930: Oscar Brown lived with his wife Elizabeth and black roomers Henry Hayes, Crystal Starling, and Dora Walton here in 1930.	44
59	402 South Idaho	1910: John and Mary Brown lived here in 1910. The couple worked in the food industry together, Mary as a caterer for a restaurant, and John as a cook for the railroad.	44
60	522 South Idaho	1910: Middle aged couple Dora and Dudley Walton lived here in 1910. Dudley worked odd jobs around town.	44
61	517 South Montana	1910: The widow Mary Evans lived here alone in 1910. She worked as a laundress.	44
62	225 South Dakota	1910: James Wilson lived here with his wife Hattie and daughters Mora and Crystal. James worked as a concrete layer, and Hattie worked as laundress.	45
63	234 South Dakota	1930: Lilian Robinson and her six year old son Wright lived here in 1930. Lilian worked as a laundress.	45
64	69 West Silver	1930: Rance and Claudie Ware lived owned there home. Rance worked as a janitor for a local office building.	45
65	26 West Mercury	1930: Merritt C. Williams, a musician in a local brass band, lived here with Dee Stewart in 1930.	45
66	21 West Silver	1910: Elderly couple, John and Louisa White lived here in 1910. Louisa still worked as a laundress.	45
67	229 South Main Alley	1910: Robert Sampson lived here in 1910. His profession is only listed as Dealer.	45
68	224 South Main Alley	1910: George Stewart lived here alone in 1910, working odd jobs around Butte.	45
69	235 South Main	1930: Frank Yamer lived here with his wife Grace, sister-in-law Beatrice C. Jeffers, and black lodgers William Freeman Jr, Truss Carr, and Augustus Horton at the Silver City Club, where Frank worked as a cook.	45
70	334 South Dakota	1910: Harry and Salina Esters lived here with their two children, 22 year old Lester, and 21 year old Letha.	45

SANBORN MAP ADDRESS KEY, BUTTE, MT

71	300 Colorado	1930: Maggie O'Day, Josephine A. Henley, Harold Hatsell, Leona P. Mortimer, George H. Martinson, and Johnson Jordan all lived at this address in 1930. It may have been a boarding house.	45
72	26 West Silver	1930: Hattie Smith, a single woman working as a cook, lived here with two roommates, Lena H. Ford and Helen Holmes.	45
73	306 Colorado	1930: Marietta Finely and Billie Harper rented this home together in 1930. Neither is listed as working.	45
74	24 Silver	1930: Elmer and Gaynell Graham were a middle aged couple that lived here on a largely black street. They both worked as cooks for restaurants.	45
75	20 Silver	1930: Georgia Nay lived here with roomer Arthur Wallace in 1930. Wallace cooked for a restaurant.	45
76	305 South Main Alley	1930: In 1930, it appears that Sarah Patterson lived here alone. She was 59 years old, and did not list a job or income.	45
77	311 South Main Alley	1930: Lester Paynes lived here in the alley behind Main Street. He was listed as a laborer, doing odd jobs around Butte in 1930.	45
78	11 ½ West Porphyry	1930: Crockett Alexander lived here in 1930. He worked in a department store as a janitor at the time.	45
79	406 South Montana	1930: Mack McPheeters lived here in 1930, and is listed as a janitor for the telegraph office.	45
80	418 South Montana	1930: M.E. Davis owned this house in 1930. He lived there with boarders Lottie Williams and Aaron Baxter.	45
81	413 South Dakota	1930: Sarah Poole lived here in 1930. She did not live with her husband, Charles Poole, who is listed that same year residing at 317 South Crystal Street.	45
82	422 Colorado	1930: 422 Colorado and the structure to its rear appeared to have operated as boarding houses in 1930, with quite a few black men and women living there at the time.	45
83	411 South Main	1930: Henrietta Quinn and her son Donald lived here in a large tenement home in 1930.	45
84	230 South Main	1910: Frank Oneal lived here in apartment style rooms, and worked as a janitor for a music store in 1910.	46
85	38 East Mercury	1910: Ophelia Sanders lived here in 1910. The block is listed as female boarding, where Sanders worked as a prostitute.	46
86	60 East Mercury	1910: Charles Davis lived here with two black women, Billie Holmes and Jennie Melam.	46
87	209 rear South Wyoming	1930: Bertha Dillion lived here in 1930. She was employed as a janitor for the boarding house she lived in.	46
88	602 South Idaho	Built in 1901, this was the longtime home of the AME church, known as Shaffer's Chapel. See Shaffer's Chapel HPRF in the <i>Places</i> page.	49
89	304 West Aluminum	1930: Ida Dunn, and her daughters Bernice and Josephine lived here in 1930, when Ida worked as maid for a department store.	49
90	222 West Aluminum	1910: Jesse and Alice Smith lived here together in 1910. Jesse, the husband, does not appear to be listed as black, perhaps he was white.	49
91	114 West Gold	1910: Katie Clark lived here in 1910. She is listed as a doing housework around Butte in the census.	51
92	511 Colorado	1910: George and Willie Lee Taylor lived here in 1910. George worked as a porter for a pool room, and Willie Lee was a dressmaker.	51
93	616 Colorado	1910: Addie Tomson lived here with a Mexican man and other working class residents. Addie worked as a dressmaker.	52
94	124 East Gold	1910: Harry Johnson worked in Butte as a plasterer, and lived here in 1910.	52
95	437 Hopkins	1910: Henry Johnson, a factory engineer lived here in on Butte's	54

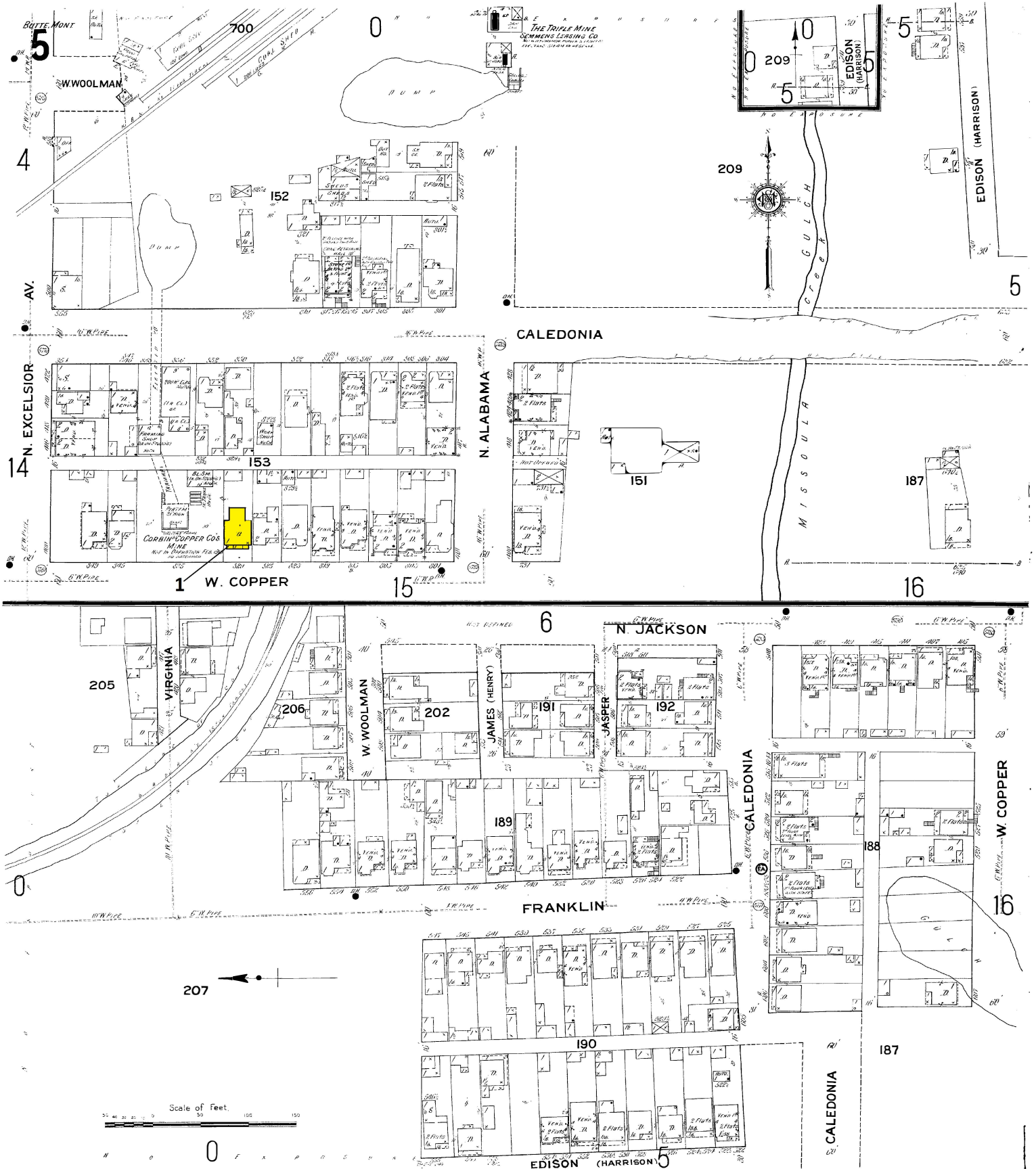
SANBORN MAP ADDRESS KEY, BUTTE, MT

		East side in 1910.	
96	241 E Platinum	1930: Hugh Vaughn and his housekeeper Betty Hoskins lived here together in 1910. Vaughn worked for the railroad.	54
97	12 West Aluminum	1930: Percy and Odessa Harris rented their home here in 1930. Percy is listed as a janitor.	55
98	714 South Dakota	1930: Walter Scott, an engine cleaner for the railroad, lived here with his wife Nellie and son Wallace.	55
99	714 Maryland Ave	1930: Robert Howard and William Fenter boarded with the family of Steve E. Ryan, a white blacksmith for the copper mines.	58
100	1037 Iowa Ave	1910: Charles and Birdie Fortune lived here with their family in 1910. Charles worked as a store janitor.	59
101	908 South Wyoming	1910: This was the home of Scott and May Webb, who lived here with their four children.	63
102	1006 South Wyoming	1910: Anna Coughlin and her mother Mary Brown lived here with Anna's white husband Cornelius, a teamster in Butte.	63
103	1103 South Wyoming	1910: Louis and Anna Sheets lived here in 1910. Louis worked as a bank janitor.	64


From 1910 Census


From 1930 Census

1910 & 1930



From 1910 Census

 Frome 1930 Census

 **1910 & 1930**

BUTTE, MONT.

13

3

NOT DEFINED

CALEDONIA

682

G.W. PIPE

780

707

70

W. COPPER

78

710

709

28

NOT DEFINED

 W. QUARTZ



782

71

712

783

718

719

W. BROADWAY




Scale of Feet

37

15

5

W. COPPER

 1910 Census
 1930 Census
 1910 & 1930

SOUL GULCH Creek

W. QUARTZ

W. GRANITE

W. BROADWAY

W. PARK

39

N. CLARK 57th AV.

16--

N. CLARK

S. CLARK
AV.


Scale of Feet.

10 20 30 40 50 60 70 80 90 100

 1910 & 1930

16



 **1910 & 1930**

From 1910 Census

From 1930 Census

1910 & 1930





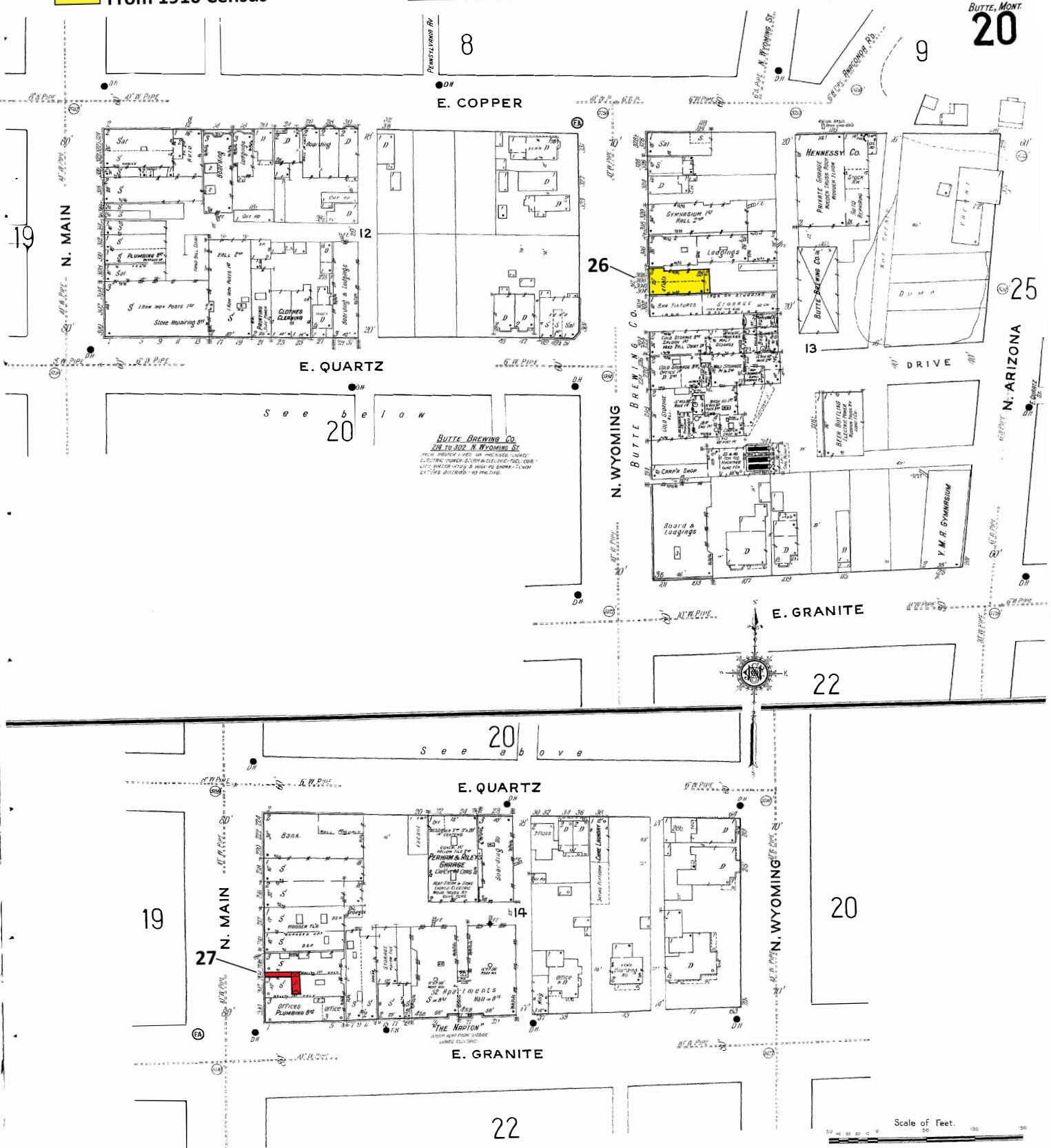
From 1910 Census



From 1930 Census



1910 & 1930

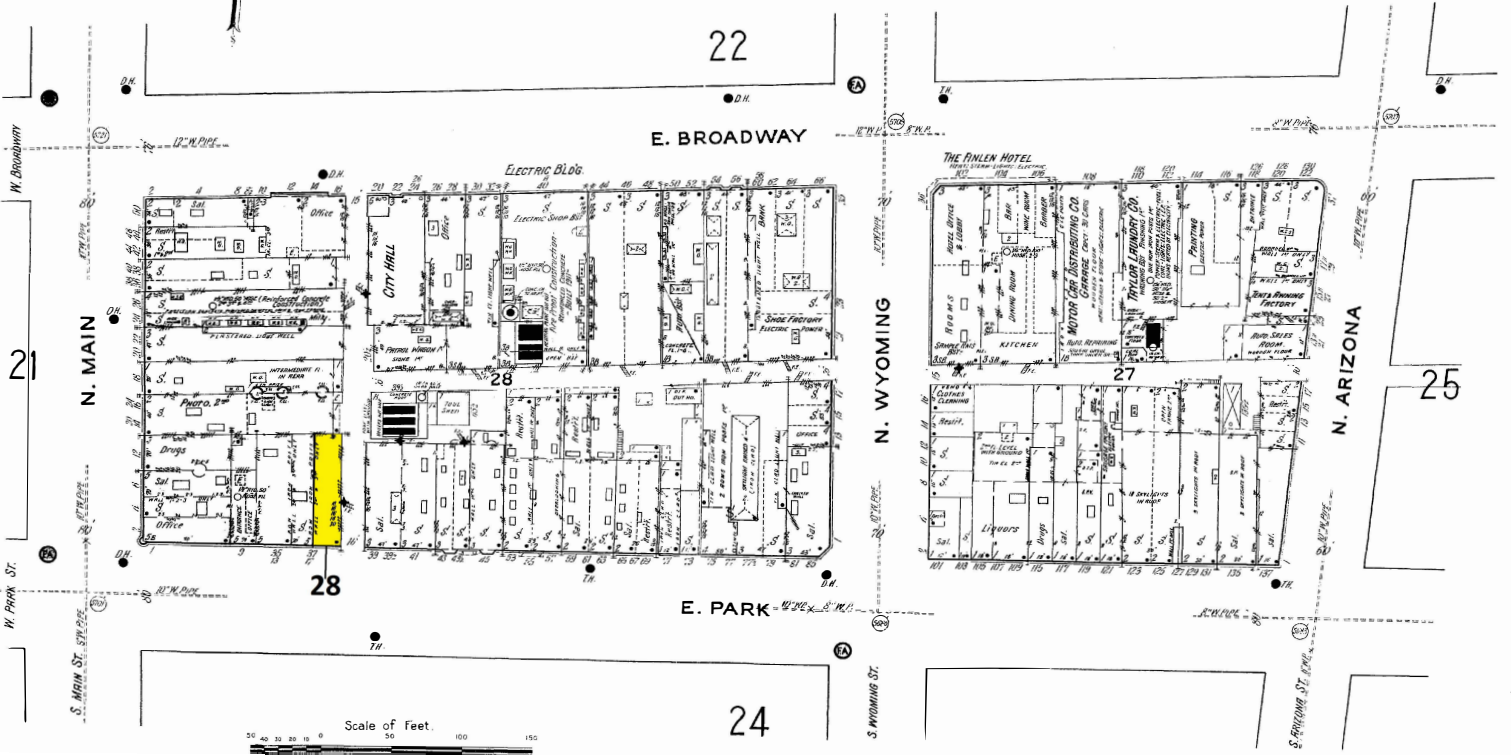
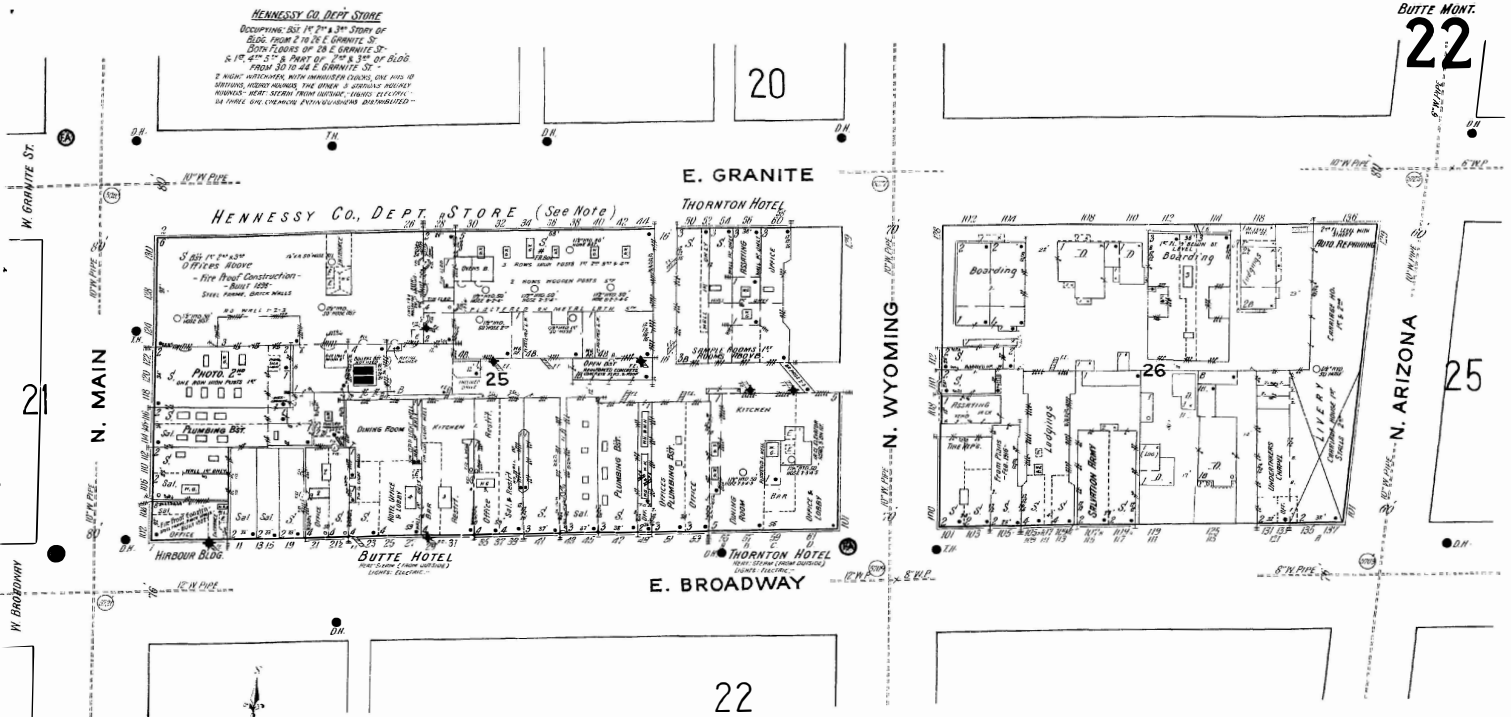


From 1910 Census

From 1930 Census

1910 & 1930

HENNESSY CO. DEPT. STORE
Occupying 355 1/2' x 3' 3" story of
Block from 2 to 3 E. GRANITE ST.
South end of 25 E. GRANITE ST.
5 1/2' 4" 5' 1" & part of 3' 3" 3' 3" of Block
from 35 to 40 E. GRANITE ST.
2nd floor: HATCHES, WITH UNUSUAL STAIRS, ONE AND 1/2
STAIRS, HATCHES, THE OTHER 1/2 UNUSUAL HATCHES
HATCHES - HERE SEEN FROM HATCHES - HATCHES -
SEE INDEX AND CHARTER PHOTOGRAPHIC DISTRIBUTION



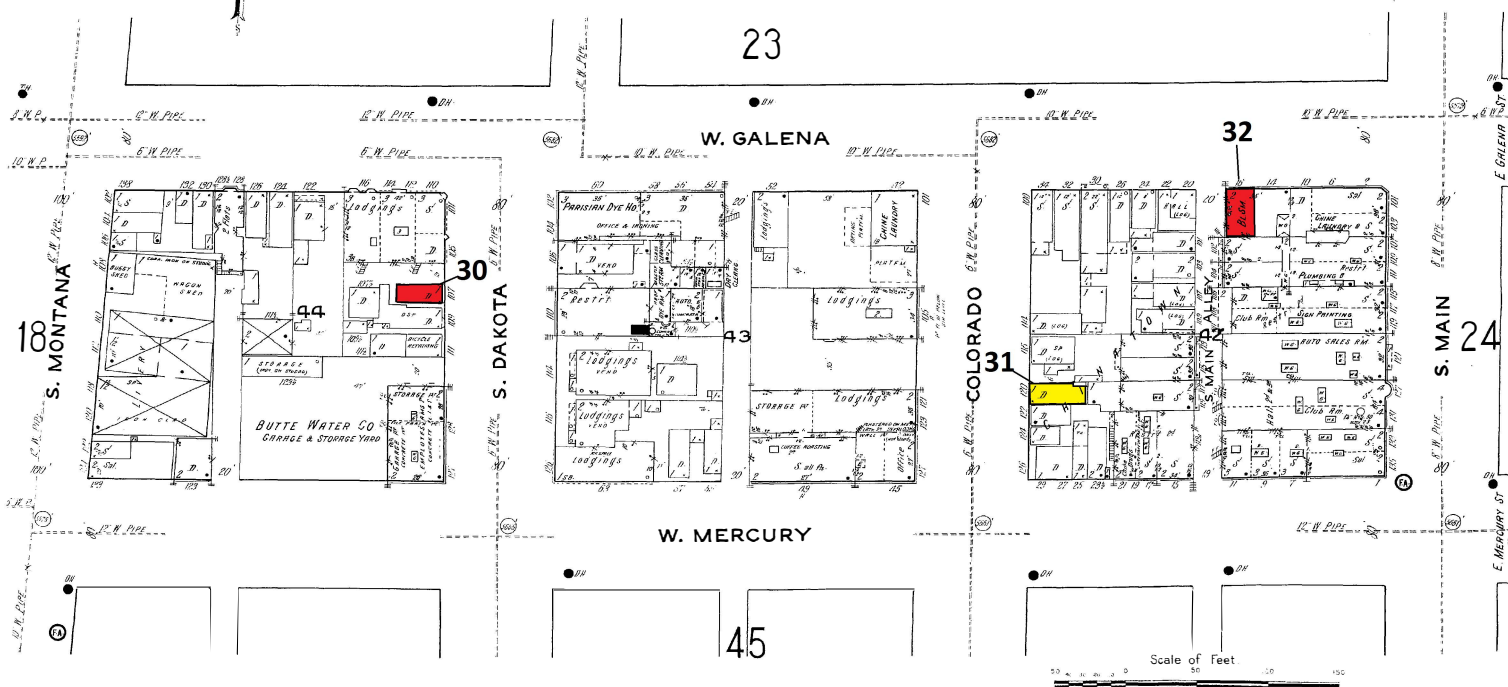
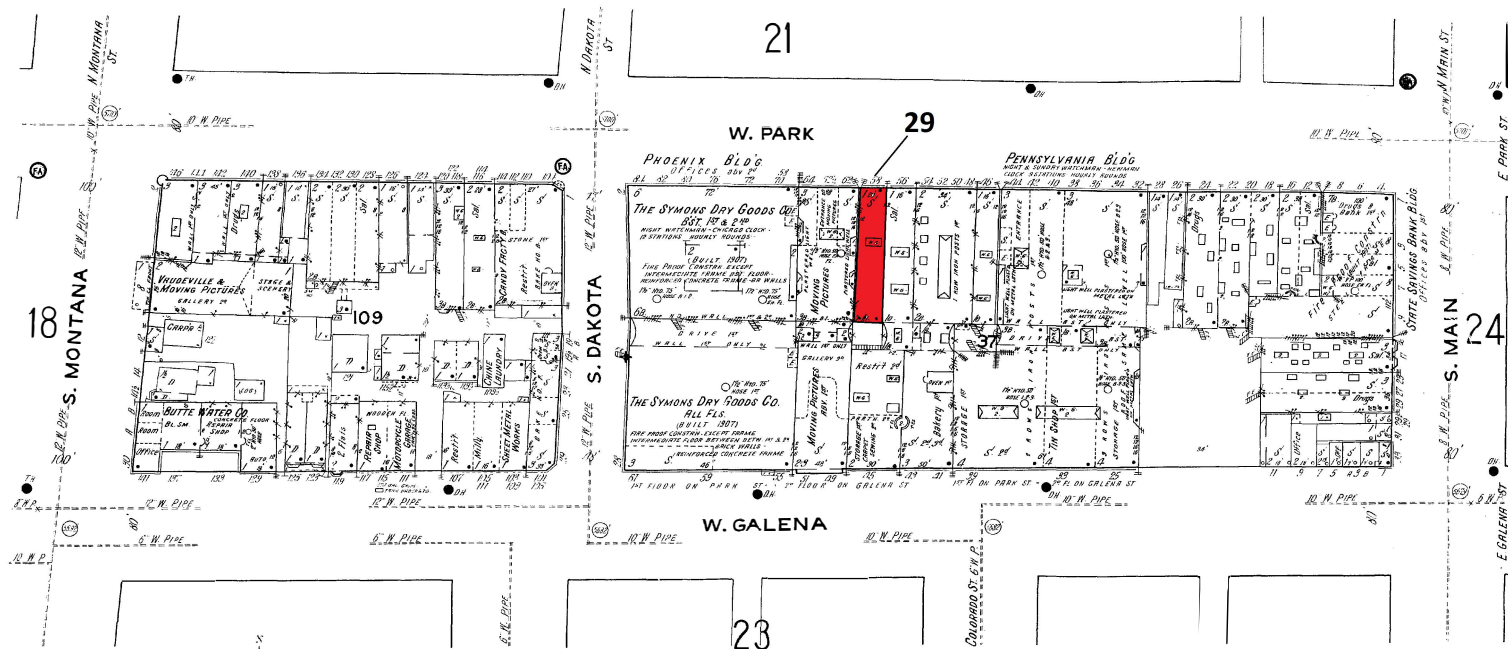
BUTTE, MONT.

23

From 1910 Census

From 1930 Census

1910 & 1930





From 1910 Census



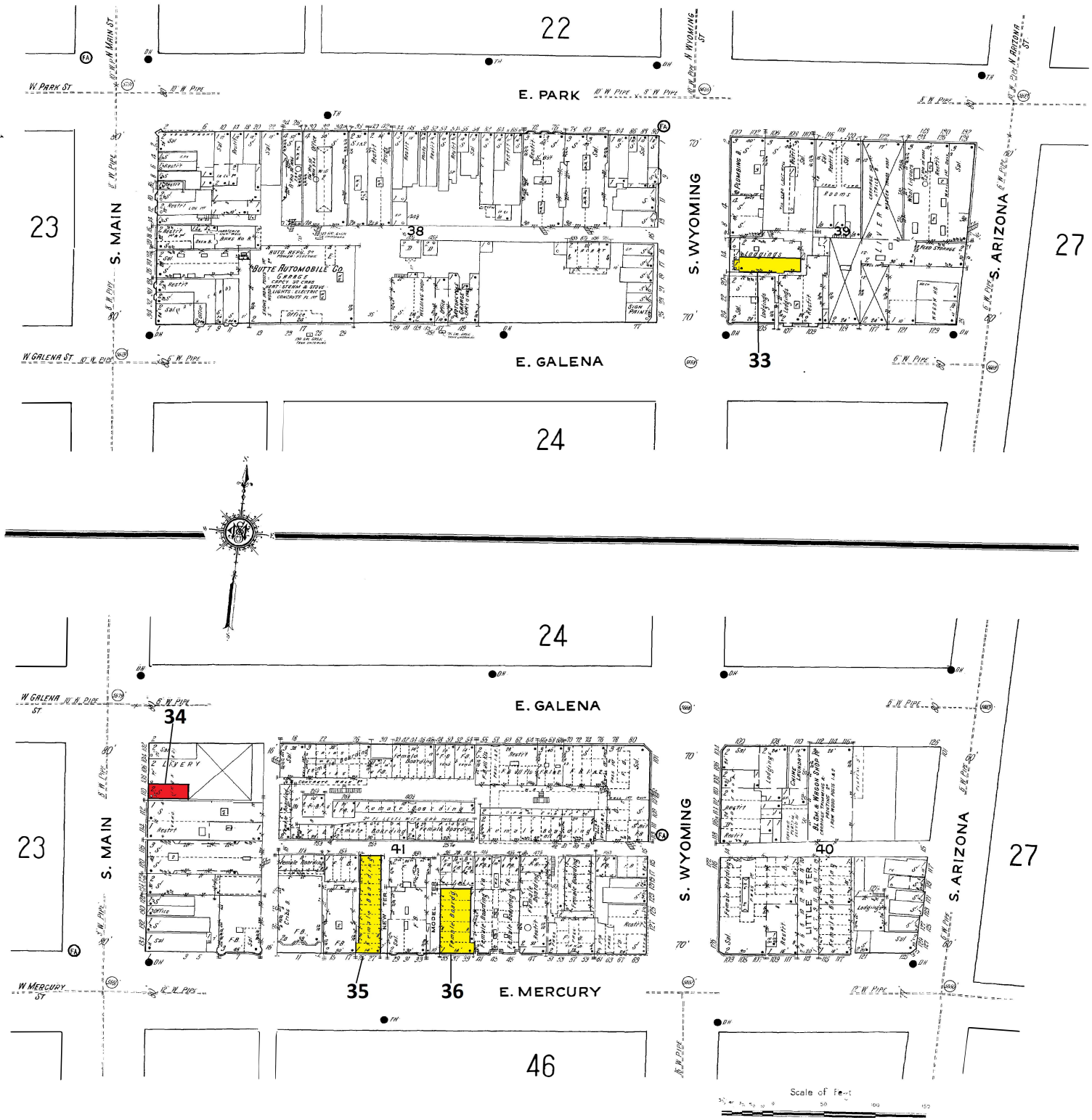
From 1930 Census

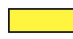



1910 & 1930


BUTTE, MONT.

24





 From 1910 Census


 From 1930 Census

 1910 & 1930



 From 1910 Census

 From 1930 Census

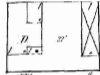
 1910 & 1930

BUTTE MONT.
31

VACANT HILLSIDE BEYOND

E. GRANITE
NOT DEFINED

0



338
335
332
329
326
323
320
317
314
311
308
305
302
299
296
293
290
287
284
281
278
275
272
269
266
263
260
257
254
251
248
245
242
239
236
233
230
227
224
221
218
215
212
209
206
203
200
197
194
191
188
185
182
179
176
173
170
167
164
161
158
155
152
149
146
143
140
137
134
131
128
125
122
119
116
113
110
107
104
101
98
95
92
89
86
83
80
77
74
71
68
65
62
59
56
53
50
47
44
41
38
35
32
29
26
23
20
17
14
11
8
5
2
0

ANACONDA COPPER MINING CO.
PENNSYLVANIA MINE
- For Report See Sheet 32 -

E. BROADWAY

N. GAYLORD

AV.

FAUSETT

N. ST. LAWRENCE

N. WARREN

S. ST. LAWRENCE

S. WARREN



47

E. PARK

32

S. GAYLORD

AV.

E. GALENA

Scale of Feet.
50 100 150

SHIELDS AV.

TALBOT AV.

33


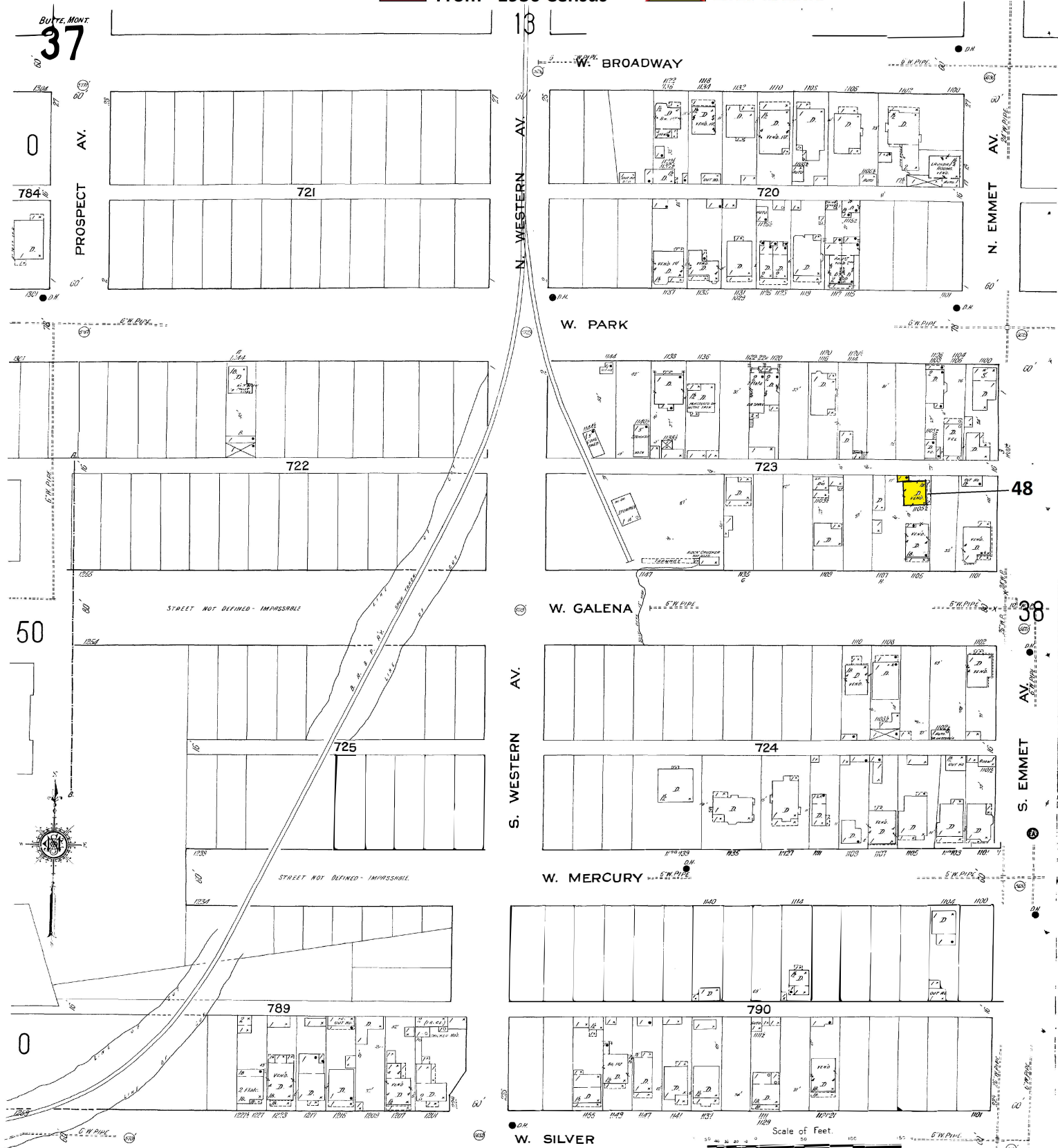
E. MERCURY

EAST BUTTE EXTENSION NO. 3
NOT IN OPERATION FEB. 1910

30

29

31

 1910 & 1930

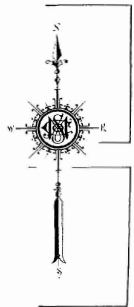
From 1910 Census

From 1930 Census

1910 & 1930

BUTTE, MONT.

40



39

18

44

43

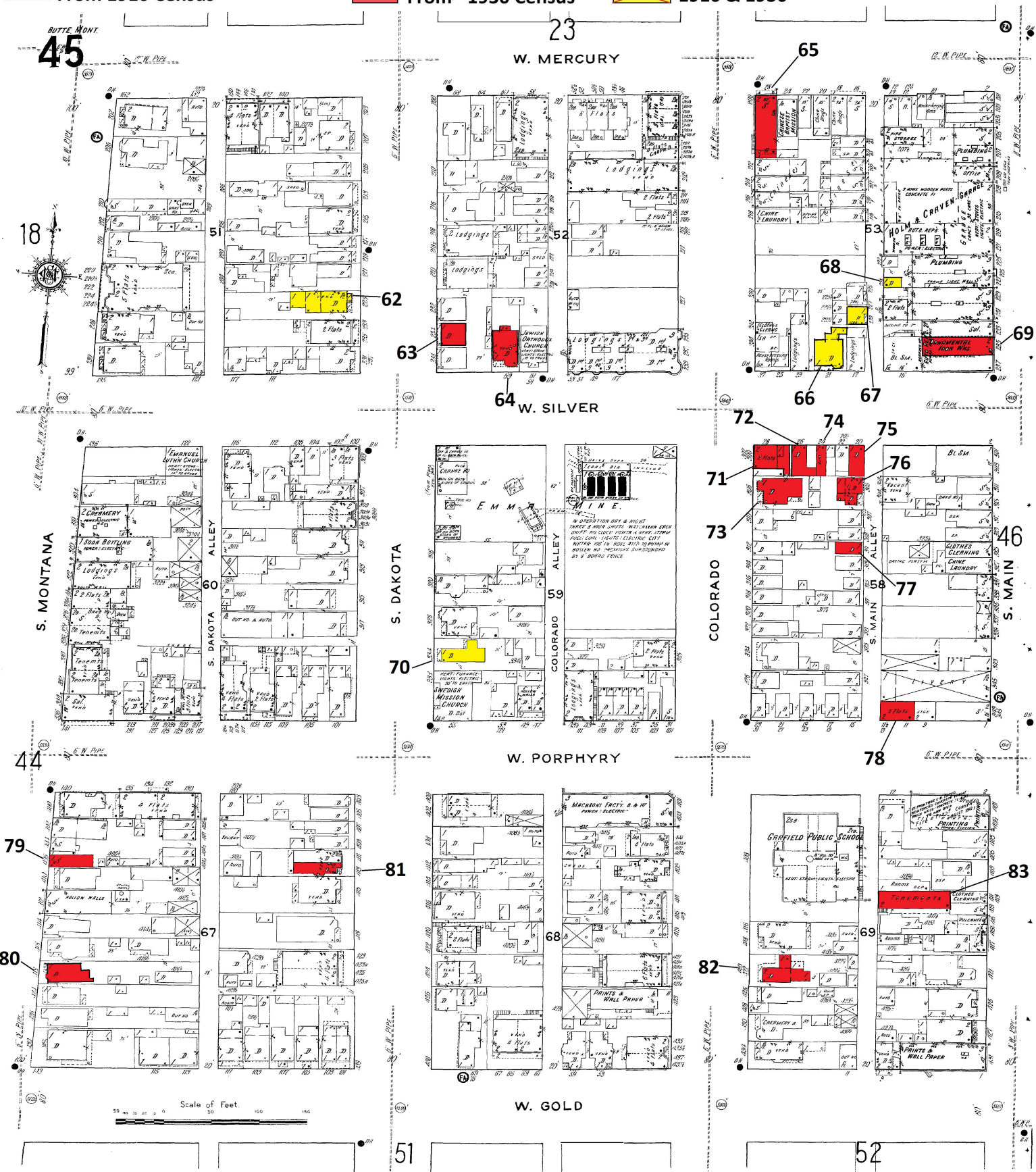
From 1910 Census

From 1930 Census

1910 & 1930



 **1910 & 1930**

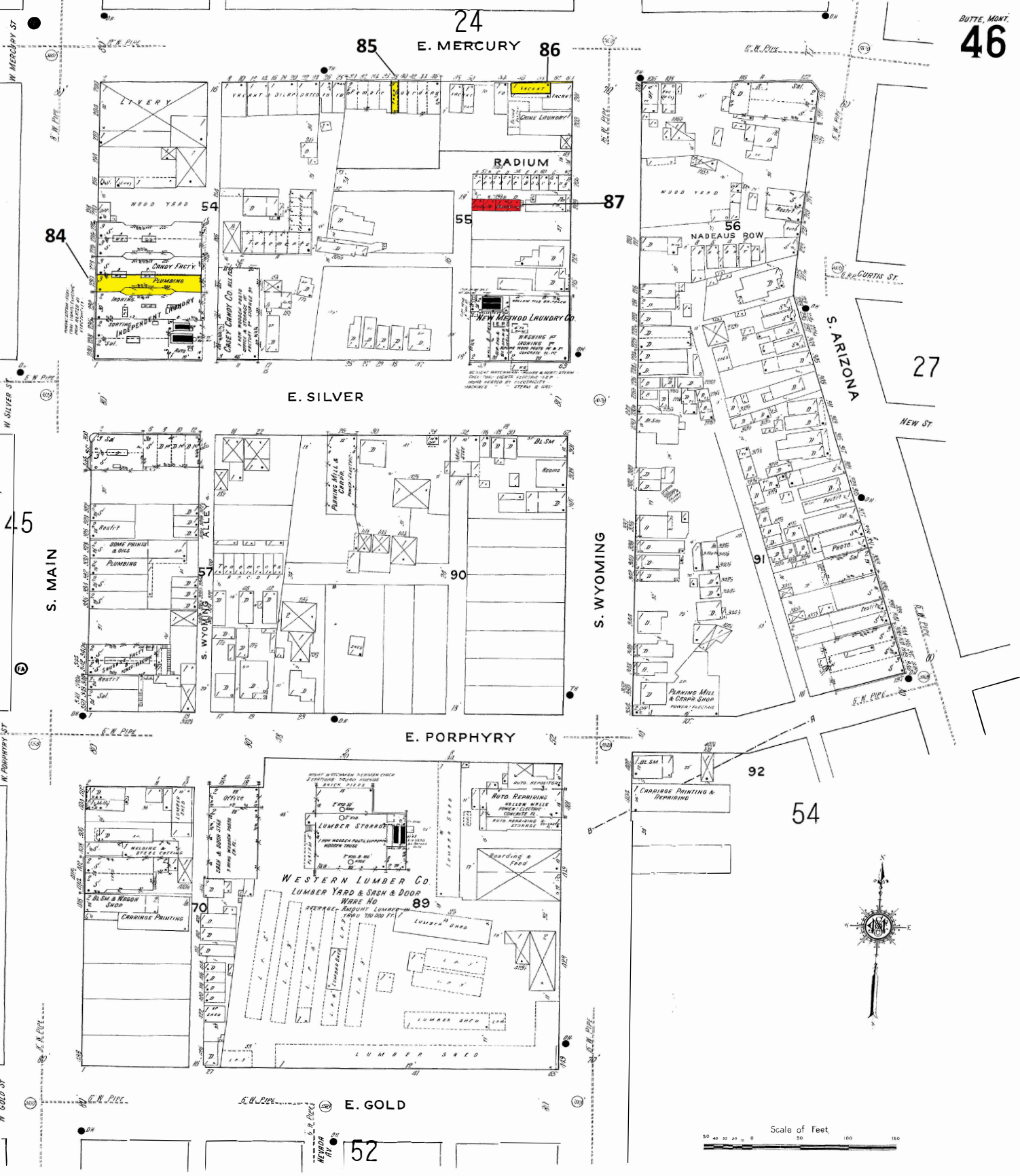


From 1910 Census

From 1930 Census

1910 & 1930

BUTTE, MONT.
46



From 1910 Census

From 1930 Census

1910 & 1930



From 1910 Census

From 1930 Census

1910 & 1930

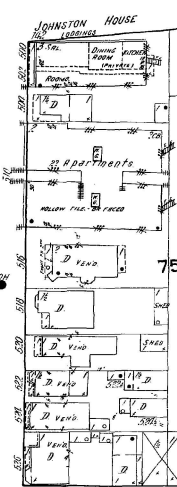
BUTTE, MONT
51

45

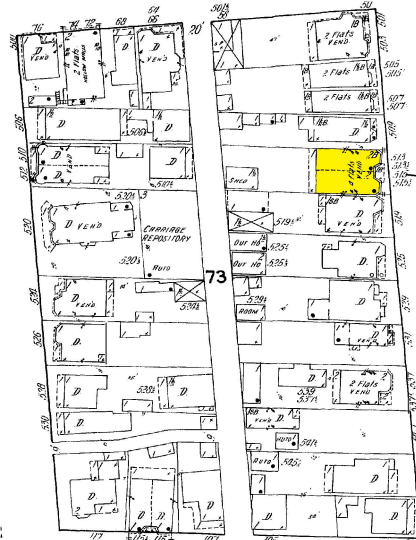
91

W. GOLD

44



74



92

W. PLATINUM

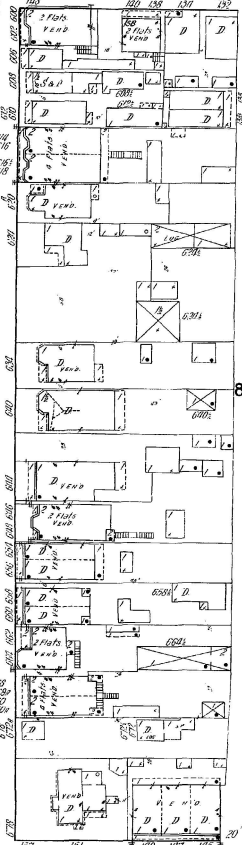
S. MONTANA

S. DAKOTA

COLORADO

52

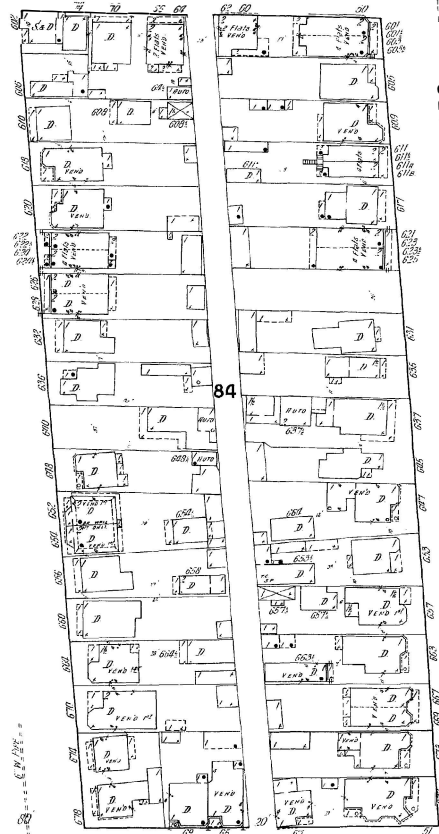
49



82

PLACER

83




84


W. ALUMINUM

Scale of Feet.

55

 From 1910 Census

 From 1930 Census

 1910 & 1930

46

BUTTE, MONT.
52

45

W. GOLD

GOLD

94

72

71

88

W. PLATINUM

E. PLATINUM

54

S. WYOMING

51
COLORADO

93

85

S. MAIN

MARYLAND

UPTON

NEVADA

E. ALUMINUM

58

W. ALUMINUM

55

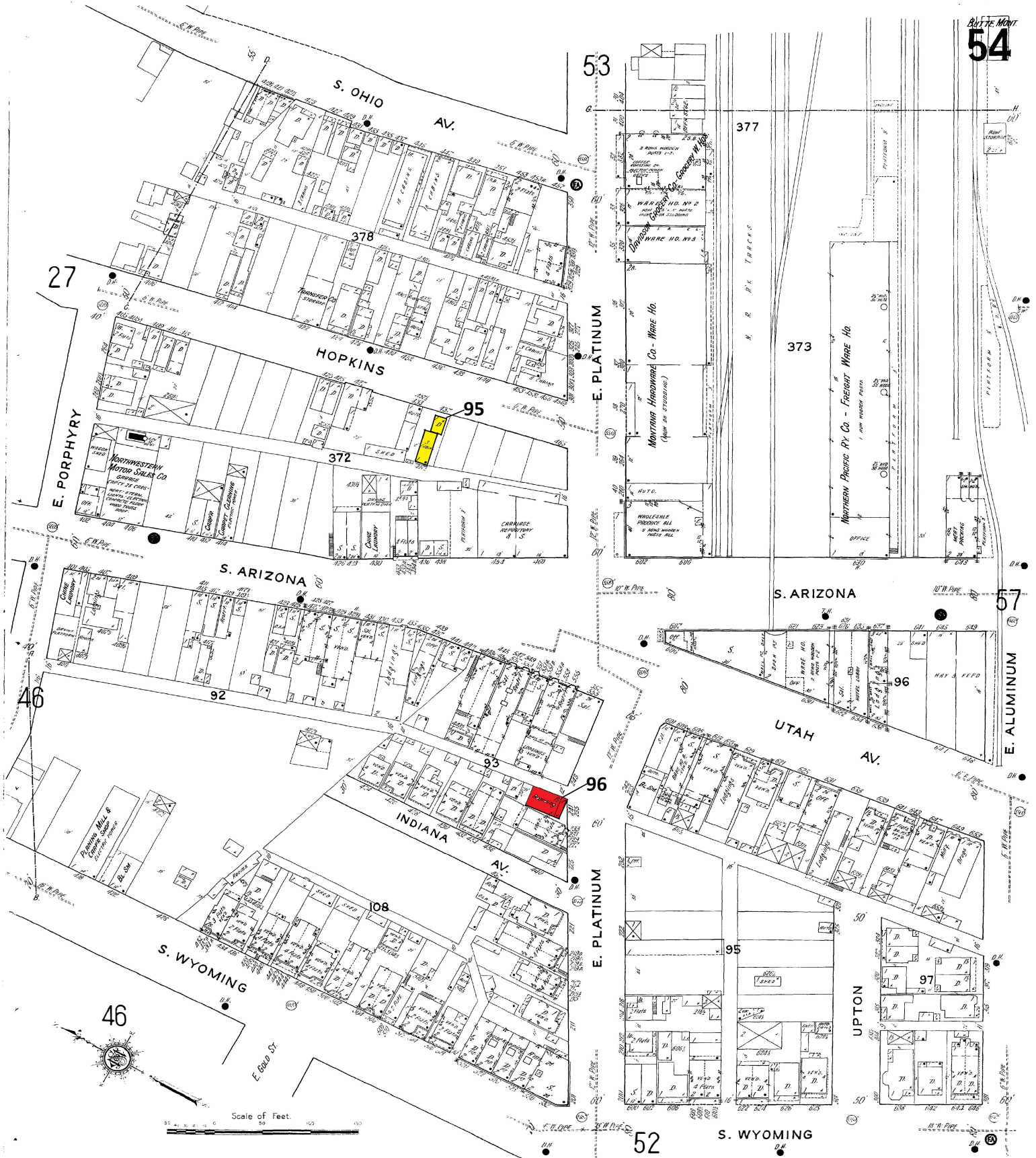
Scale of Feet.



From 1910 Census

From 1930 Census

1910 & 1930





From 1910 Census


From 1930 Census

1910 & 1930



 From 1910 Census

 From 1930 Census

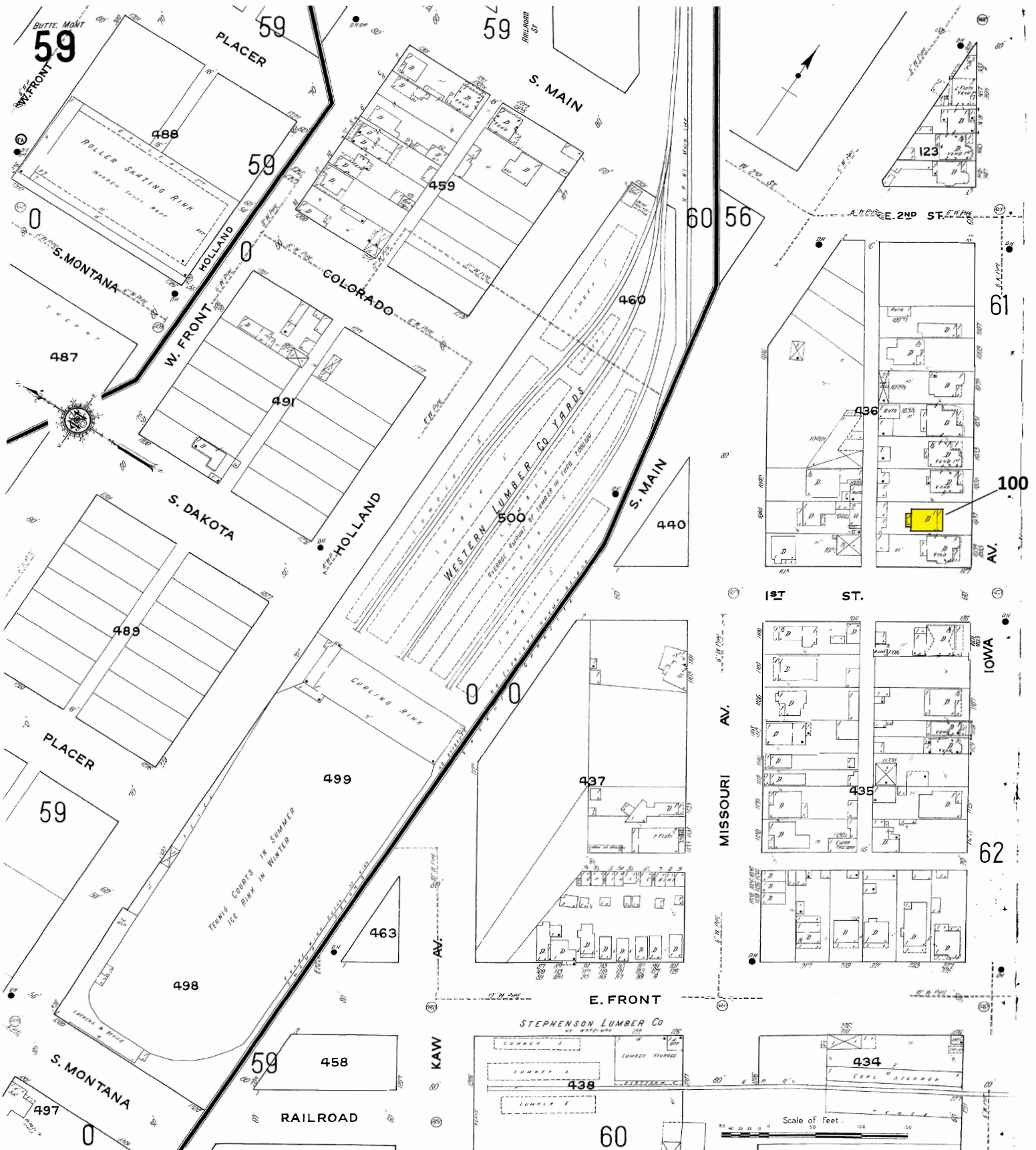
 1910 & 1930



From 1910 Census

From 1930 Census

1910 & 1930



From 1910 Census


From 1930 Census

1910 & 1930

BUTTE, MONT.

63



 1910 & 1930